

the Co-op Connection

FEBRUARY 2021

NEWS AND INFORMATION FROM YOUR POWER PARTNER



Feel The Chill In Your Bill?



This winter has already surpassed the one before in terms of cold weather.

When the thermometer dips below freezing, heaters run a lot more to keep the home comfortable. The more the heater runs, the more energy it uses. Your electric bill is mostly determined by how much energy is used. So, a bill that is much higher than the month before is all because of the increase in energy usage. CFEC has not conducted an energy rate change since 2018.

The Numbers Show It

There are many ways to see how much energy has been used in your home. Your bill is one way to look at the monthly usage. You can look at your paper bill or on the CFEC website through the Member Portal or even through the CFEC Connect app.

The CFEC Member Portal offers a “Usage Analysis” that shows energy usage against both the high and low temperature for the day. A quick comparison shows the difference in this December and the one prior.



In December 2019, the lowest temperatures were 33 and 34 degrees with the remaining days well above that temperature. In

December 2020, there were two days in a row with a low temperature of 27 degrees with another day at the low of 29 degrees, and additional days in the low 30s. With multiple days of lower temperatures, heating units had to work much harder to maintain a comfortable temperature in the home.

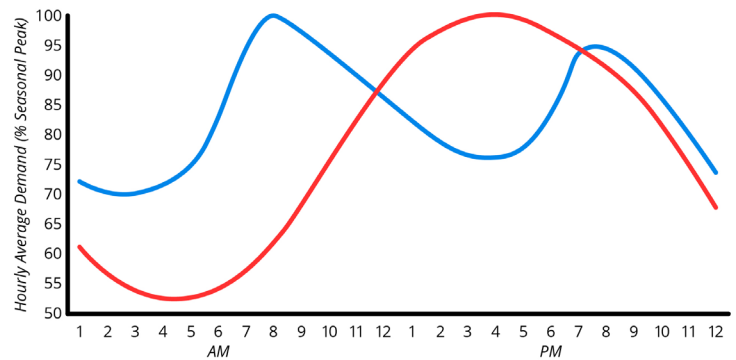
Twin Peaks In Energy Usage

Another reason winter energy usage is often more than in summer is shown in the graphic titled “A typical day of energy use.” In the summer, energy usage peaks in the hottest part of the day. It is lowest in the morning and evening.

A typical day of ENERGY USE

What does a typical day look like in terms of energy use?

In the **summer**, demand is at its lowest first thing in the morning and at its highest at the peak heat of the day around 4 p.m. In the **winter**, demand is at its highest during the coldest part of the day, when people are getting ready for work or returning home.



— Winter
— Summer

However, in the winter things are very different. Energy usage actually peaks twice during the day — once in the morning, when people get up and get ready for work or school, and again in the evening, when people come back home. This double peak in energy usage is another reason for increased electric bills in the winter.

But there are things you can do to help reduce energy usage in the winter and still stay warm.



**Central Florida Electric
Cooperative, Inc.**

~YOUR POWER PARTNER~

Our mission is to be the finest example of an electric cooperative where excellent service, competitive rates and concern for the consumer, community and environment guide our every action.

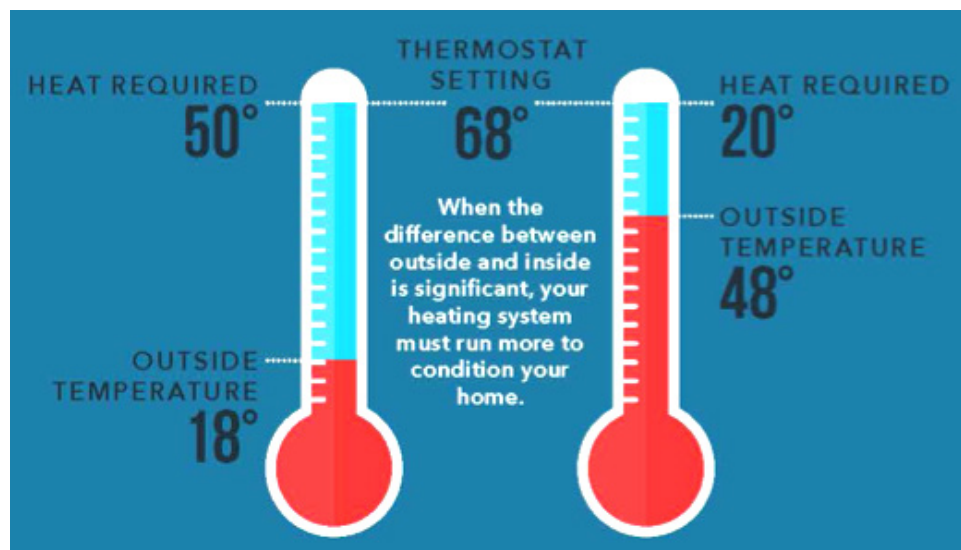
Cover Photo By CFEC Member Karen Bird

Ways To Reduce Energy Usage

- Open curtains on your south-facing windows during the day to allow sunlight to naturally heat your home. Close them at night to reduce the chill you may feel from cold windows.
- Use a heavy-duty, clear plastic sheet on a frame or tape clear plastic film to the inside of your window frames during the cold winter months. Make sure the plastic is sealed tightly to the frame to help reduce infiltration.
- Install tight-fitting, insulating drapes or shades on windows that feel drafty after weatherizing.
- When you are home and awake, set your thermostat as low as is comfortable.
- When you are asleep or out of the house, turning your thermostat back 10° to 15° for eight hours can help you save considerably.
- Seal the air leaks around utility cut-throughs for pipes, gaps around chimneys and recessed lights in insulated ceilings, and unfinished spaces behind cupboards and closets.
- Add caulk or weatherstripping to seal air leaks around leaky doors and windows.
- Maintain your heating system and replace your filter once a month or as needed.

Why Am I Using So Much Energy?

In cold weather, your heating unit works much harder to keep your home comfortable. Even if you do not change your thermostat setting, your system runs longer to heat your home.



When the difference between the outside temperature and the inside temperature is significant, your heating unit must run more to reach your desired setting. The more your heating system runs, the more energy it uses.

Adult Education Grant Awards

Central Florida Electric Cooperative Educational Charity, Inc., recently began an adult education grant program.

CFEC Educational Charity, Inc., is a non-profit organization whose purpose is to distribute scholarships and educational grants to members of the service area. Funding for these educational awards comes from unclaimed capital credit refunds.

Capital credits are the cost margin generated when CFEC's rates and budgets do not match perfectly, which is often the case given weather and material expense variations. When a margin is created between what is taken in and what is needed, this excess is given back to the members at a future time. When those funds go unclaimed after a period of time designated by the state of Florida, the monies go to the CFEC Educational Charity, Inc.

Back To School

The adult education grant program is for Members or a person in the Member's household who is 25 years of age and seeking to return to college or school to obtain their

General Education Diploma, a license such as a Real Estate License, to enhance their computer skills or receive other accreditations or certificates.

The availability of CFEC's adult education grants as well as program details and instructions on how to apply will be announced on the CFEC website and Facebook page.

Congratulations To These Recipients

Participation in the first ever CFEC Education Charity Adult Education Grant process was tremendous and 15 grants were awarded.

Some of the Members who received grants are as follows: Kasidy Cothron, Julio E. Eguigurems, Genny D. Foshee, Christina S. Johnson, Eli Long, John Lord, Shaprell Malivert, Jennifer Frost Osteen, Kiley Stutts, Royal Spain and Ashley Hope Swilley.

Congratulations to these Members! CFEC strives to support the educational efforts of Members, employees and area youth.



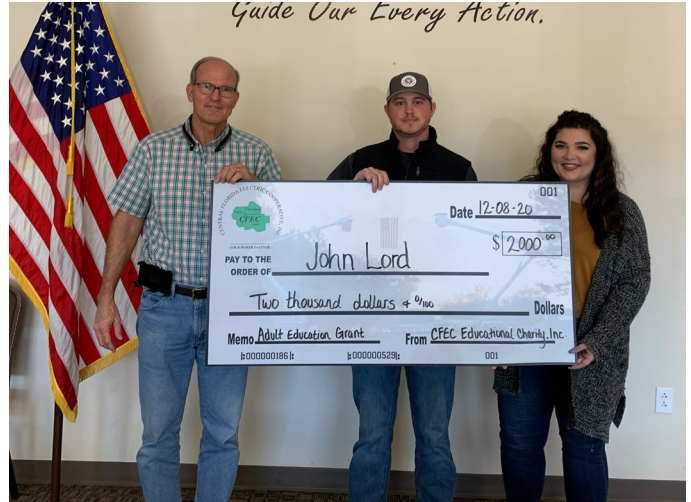
Genny Foshee, Bronson Middle High School guidance counselor, received a CFEC education grant. She is pictured with CFEC Communications Specialist Madison Redd.



Also receiving a grant was Royal Spain who is pictured with CFEC Communications Specialist Madison Redd.



Ashley Swilley received a CFEC adult education grant. Pictured with her are (from left) CFEC General Manager Denny George, Communications Specialist Madison Redd, Executive Secretary Jennifer Robson and Vice President of Member Services Tony Wasson.



A CFEC adult education grant was awarded to John Lord. He is pictured with CFEC General Manager Denny George and Communications Specialist Madison Redd.

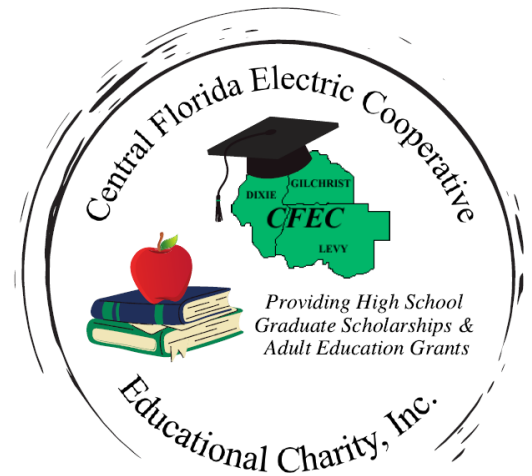
Attention Seniors: It's Scholarship Time!

The Central Florida Electric Cooperative Educational Charity, Inc. has opened the 2021 scholarship program for applications.

To be eligible, an applicant's parents or legal guardian must be an active member of CFEC.

Scholarships are awarded in the amount of \$2,000 at \$1,000 per semester to be used within one year. Applications are available on the CFEC website at www.cfec.com. For more information visit the website or contact you school's guidance counselor.

The deadline for applications is March 11, 2021.



Strawberry Brie

INGREDIENTS

- 1 cup strawberries, chopped
- ½ cup pecans, chopped
- 3 tablespoons strawberry jam or preserves
- 2 teaspoons balsamic vinegar
- 1 (6-inch) wheel brie cheese
- 1 ½ tablespoons fresh lime zest
- ½ cup fresh mint leaves, chopped



PREPARATION

Preheat oven to 275 degrees. In a small sauce pot, cook jam and vinegar over medium heat until bubbly. Place brie on an oven-safe serving platter or dish. Place chopped strawberries and pecans on top of brie wheel. Cover with jam mixture. Bake brie wheel until it is warm and soft, about 15 minutes. Garnish with chopped mint leaves. Serve immediately with crackers or crusty bread.

Strawberry Dessert Skewers



INGREDIENTS

- 1 (16-ounce) package strawberries
- 1 angel food cake (homemade or store bought)
- 1 cup hot fudge sauce or melted chocolate
- 6 large wood or bamboo skewers

PREPARATION

Lightly rinse, pat dry and remove stems from strawberries. Some of the larger strawberries could be cut in half if necessary. Use a bread knife to cut the angel food cake into squares that are about the same size as the strawberries. Using the sharp side of the skewers, carefully alternate the strawberries and the angel food cake until each skewer is evenly full. Melt the hot fudge or chocolate slowly over a double boiler. Have fun drizzling each skewer with the fudge or melted chocolate. Serve immediately. Be creative with this recipe by using doughnuts or pound cake as well as other seasonal fruit.

Strawberry Cheesecake Dip



INGREDIENTS

- ½ cup fresh strawberries, rinsed, dried and chopped fine
- ¼ cup pecans, toasted and chopped fine
- ¼ cup honey
- ⅓ cup freshly squeezed orange juice
- 1 cup low-fat cream cheese, softened
- 1 cup low-fat sour cream
- Assorted cookies, graham crackers, biscuits, French toast or fresh fruit for dipping and spreading

PREPARATION

Set aside 1 tablespoon each of the strawberries and pecans for garnish. In a small bowl, lightly mix the strawberries, honey and orange juice. In a separate bowl, blend the cream cheese and sour cream until smooth. Add the strawberry mixture and fold together. Fold in the pecans, then cover and chill. Garnish the dip with the reserved strawberries and pecans. Serve with cookies, graham crackers or fruit for dipping. Turn a biscuit into dessert or use as a topping to French toast.

Payment Options:

- **In Office / Drive-Through** – Payments can be made at any CFEC location during working hours. Payments can also be placed in the drop-box at each location after hours.
- **By Mail** – Mail payments to: Central Florida Electric Cooperative, Inc., P.O. Box 9, Chiefland, FL 32644. Please allow sufficient time for delivery or payment may be received as late.
- **Phone / Online** – Payments can be processed through our third party provider, SEDC. A \$2.50 service fee will be charged by SEDC per \$500 transaction and is NOT a CFEC charge. Payments made through SEDC are posted to the member's account at the time of payment. Pay By Phone at 352-493-2515 or toll free at 844-434-3962. Pay online at www.cfec.com.
- **Bank Draft** – Payments can be made automatically by bank draft by filling out a form and mailing or dropping it off at any CFEC office. The form can be found at cfec.com under the "Documents" tab. Returned checks or payment arrangements cannot be processed by these banks.
- **Bank Locations** – Payments can be made at any Drummond Community Bank location or at the Lafayette State Bank in Bell, Fla., during their normal working hours. Returned checks or payment arrangements cannot be processed by these banks.



Central Florida Electric Cooperative, Inc.

~ YOUR POWER PARTNER ~

MEETING NOTICE:

The Board of Trustees for Central Florida Electric Cooperative, Inc., meet on the fourth Monday of each month at 5 p.m. at the Cooperative's main office in Chiefland. Members are always welcome to attend.

Don't Be Scammed!

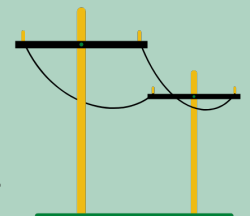
CFEC has continued to receive an extremely high number of reports from Members regarding scam calls. These scammers pose as co-op employees and threaten to disconnect electric service without immediate payment or other financial information.



Be vigilant against this kind of fraud and ALWAYS reach out to us directly at 352-493-2511 before giving out any information over the phone.

An important resource for fighting this type of crime is the Federal Trade Commission (FTC). If a member suspects they have been contacted by someone looking to commit fraud, contact the FTC to report it. The FTC can be contacted by phone at **877-382-4357**, or Online at <http://ReportFraud.ftc.gov>

To Report A Power Outage:



- **Call: 1-800-227-1302 or 352-493-2511**, follow the prompts of the Automated Outage Response system.
- **Use the CFEC Connect App:** On the Home page, click "Report An Outage," select the issue causing your outage and the information will be submitted.
- **Online:** Click on the "report outage" button located at the top of the website. Fill in the "Identify Outage Location," form and click "submit."





PRSRRT STD
U.S. POSTAGE
PAID
ORLANDO, FL
PERMIT NO. 3937

MAIN OFFICE

11491 NW 50th Ave.
Chiefland, FL 32626-3247
352-493-2511
or 800-227-1302
www.cfec.com

Physical Address/Payment Locations

MAIL ADDRESS

P.O. Box 9
Chiefland, FL 32644-0009

CROSS CITY OFFICE

207 NE 210 Ave.
Cross City, FL 32628
352-498-7322

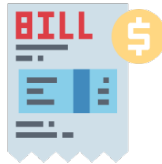
INGLIS OFFICE

167 Highway 40 West
Inglis, FL 34449
352-447-3553

ADDITIONAL PAYMENT LOCATIONS

Drummond Community Bank
Lafayette State Bank (Bell only)
*For a complete listing of payment locations,
go to www.cfec.com.
This institution is an equal opportunity
provider and employer.*

**Members Benefit From
Power Cost Adjustment**



The CFEC Board of Trustees changed the **Wholesale Power Cost Adjustment** from \$5.50 to \$7.50. This is a credit on your bill. The goal is to keep the WPCA at this level through 2021; however, it could change depending on fuel costs or the economy.

Charges On Your Residential Electric Bill:

Facilities Charge:	
30 Days @ \$0.95.....	28.50
Energy Charge:	
1000 kWh @0.098.....	98.00
WPCA: (\$7.50).....	-\$7.50
Total Current Electric:.....	119.00

Based on usage of 1,000 kilowatt hours.

In This Issue:

Feeling The Chill
In Your Bill? page 2

CFEC Education Charity
Adult Grant Recipients page 4

Scholarship Program
Now Open page 5

Some Berry
Good Recipes page 6
