

the Co-op Connection

OCTOBER 2020

NEWS AND INFORMATION FROM YOUR POWER PARTNER



Keeping Members Informed Is A Job We Take Seriously

I hesitate to write about hurricane season when there are still two months left to go. However, the reason why will become clear in a bit.



Denny George
CFEC Executive
Vice President &
General Manager

Thus far, the CFEC service area has been spared from even a glancing blow, much less a direct hit. October has historically been a month for some of the more memorable active storms, such as Hurricanes Michael in 2018, Matthew in 2016 and Wilma in 2005.

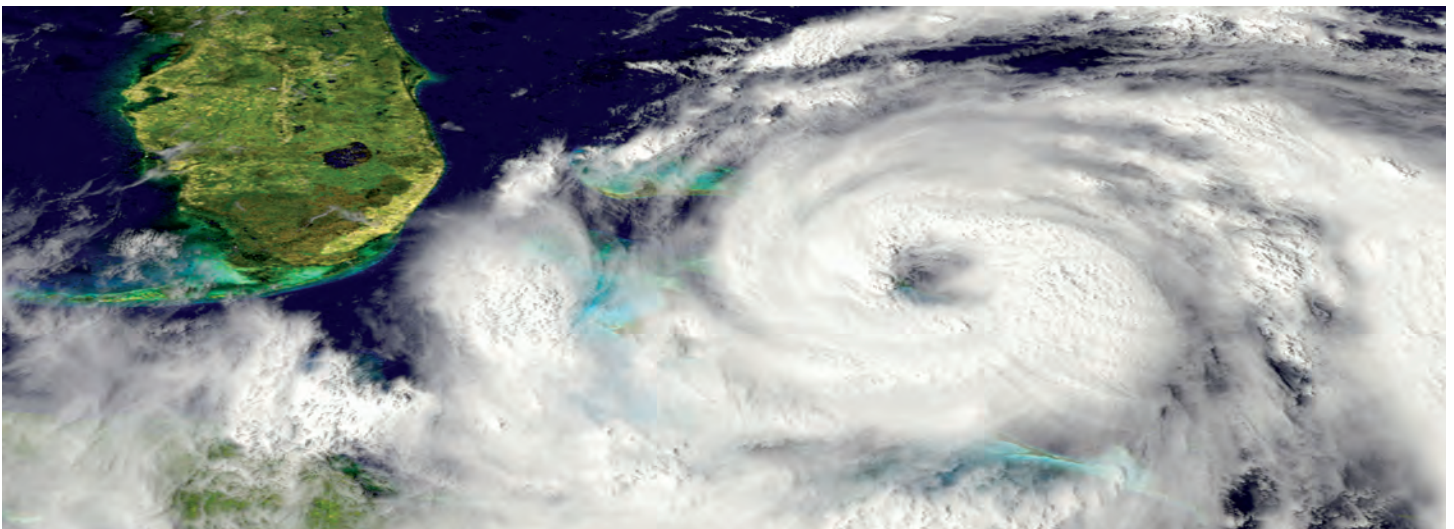
That's why we continue to be prepared for any storm potential. One of the ways we prepare is by conducting mock drills following "what if" scenarios. These drills are beneficial so that everyone becomes familiar with all the possible tasks they may be called to perform.

Preventable Tragedies

You, too, should perform "what if" storm scenarios to be prepared for the season. What if you lost power or water for an extended time? What if you had to evacuate? What if your home is flooded? What if you had to use a generator for power? Knowing ahead of time how you would approach these different situations safely is the best way to be storm ready.

As I've read about the aftermath of Hurricane Laura, I'm struck with profound sadness at the number of deaths after the storm from the improper use of generators that led to carbon monoxide poisoning. Three times as many deaths from generators, in fact, as from the storm itself. These deaths were preventable and proper education is the key.

That's one reason we take our job of educating members so seriously. Lives literally hang in the balance. Our job of providing members with the critical information they need is one of the founding cooperative principles. To do this, we use several means of reaching our diverse population.



Central Florida Electric
Cooperative, Inc.

~ YOUR POWER PARTNER ~

Our mission is to be the finest example of an electric cooperative where excellent service, competitive rates and concern for the consumer, community and environment guide our every action.

Cover photo by Madison Redd, CFEC Communications Specialist.

How Can We Reach You?

This newsletter, *The Co-op Connection*, along with Facebook, the CFEC website and bill stuffers are some of the various ways we try to reach members with news and information. We are currently looking at the possibility of sending a newsletter by email to those members who would prefer receiving it that way.

To gauge interest, we have attached the below survey for members. Because our message is a critical one at times, we want to use those methods to reach you that will make the most impact. You can help us do that by communicating to us the ways you prefer to hear our kind of news, and we'll keep providing information to help you be a more informed co-op member.

Again, stay safe and storm-ready just in case one of these tropical disturbances, or even a powerful thunderstorm, comes our way. At CFEC, we are always ready and working to provide you with reliable and affordable power in the safest way possible.

Generator Safety Tips

■ **Never run a generator indoors! Not even in a garage.** Always place the generator at least 20 feet from the home with exhaust pointed away from windows or doors.

■ **Allow the generator to cool for refueling!**

Turning off a gas-powered generator and letting the engine cool before refueling will help reduce the risk of fire. Store gas in an ANSI-approved container placed in a cool, ventilated space.

■ **Avoid electrical hazards!** It is best to plug appliances directly in to the generator. If you must use a cord, use a cord made for outdoor use that is rated for the appliance load. Always check the extension cord for cuts or tears. Installing a transfer switch that connects the generator to your circuit panel to power hardwired appliances is a good investment to avoid the safety risks of extension cords.

■ **Do not attempt to run your whole home from a generator!** Trying to power your home's wiring by plugging the generator into a wall outlet is called backfeeding, and it is very dangerous. This presents a serious electrocution risk to utility workers who may be working on your power line and an electrocution and fire risk to you and your neighbors.



Member Survey: How would you prefer to receive your monthly Co-op Connection?

Member Name: _____ Account Number: _____

Paper Mail

Email Address: _____

Email

Even if you prefer receiving the paper version of the Co-op Connection by traditional mail, it's important we have your email address on file to notify you of other important Co-op issues and services.



**Send this survey
back to us with your
next utility payment
or drop off at any
CFEC location**

Attention High School Juniors!

The New Year is just around the corner and that means it is time to talk about the CFEC's 2021 Electric Cooperative Youth Tour!

We are now accepting applications in our search to find six high school juniors from our service area. Applications are due by Dec. 4, 2020.

The tour is a two-day, fully chaperoned and expenses-paid trip to Tallahassee to see the state Capitol and learn more about how our state government works. From this group of six students, three students will be chosen to attend the Washington D.C. Youth Tour.

The Tallahassee Youth Tour is scheduled for Feb. 17-18, 2021, and the Washington Youth Tour is tentatively scheduled for June 16-21, 2021. Applications can be submitted to your school's guidance counselor, dropped off to any of our CFEC offices marked "Attn: Member Services", or emailed to mredd@cfec.com or adeloach@cfec.com.

Due to the uncertainty of COVID-19, there is a possibility that the 2021 Youth Tour could get cancelled or modified to ensure the safety of all involved. If cancelled, CFEC will still strive to provide participating students with a comparable experience in lieu of the in-person program. This could include a virtual experience or scholarships for students to use towards higher education.



For those students who apply, please be prepared to undergo a thorough interview process after completing the enclosed application. The students chosen should be available to give a brief talk about their experiences at CFEC's Annual Meeting the first Saturday in October.

For more information, please feel free to contact Alison Deloach or Madison Redd, Communications Specialists, at (352)493-2511 Ext. 6949 and (352)493-2511 Ext. 6924, respectively.

The youth tour is an exciting and engaging program for high school juniors. Previous participants return from this trip excited about what they have learned, enthusiastic about school and cherishing time spent making life-long friendships.

**Youth Tour Application Deadline:
Dec. 4, 2020!**



Shared Responsibility

It takes a lot of parts and equipment to bring power into your home or business. Much of the necessary equipment is the responsibility of your power provider, Central Florida Electric Cooperative.

However, there are some parts that are the responsibility of the member.

CFEC is responsible for servicing and maintaining all facilities up to the point of delivery, which is normally the weatherhead. Any damage to these lines or equipment to the point of delivery, including the meter, will be fixed as quickly as possible once it is brought to the attention of the cooperative.

All wiring and equipment after the point of delivery is the responsibility of the member. This includes the meter can, service

riser (conduit), attachment hardware, weatherhead and associated vegetation management. Members should contact an independent electrician for any repairs or improvements to these items.

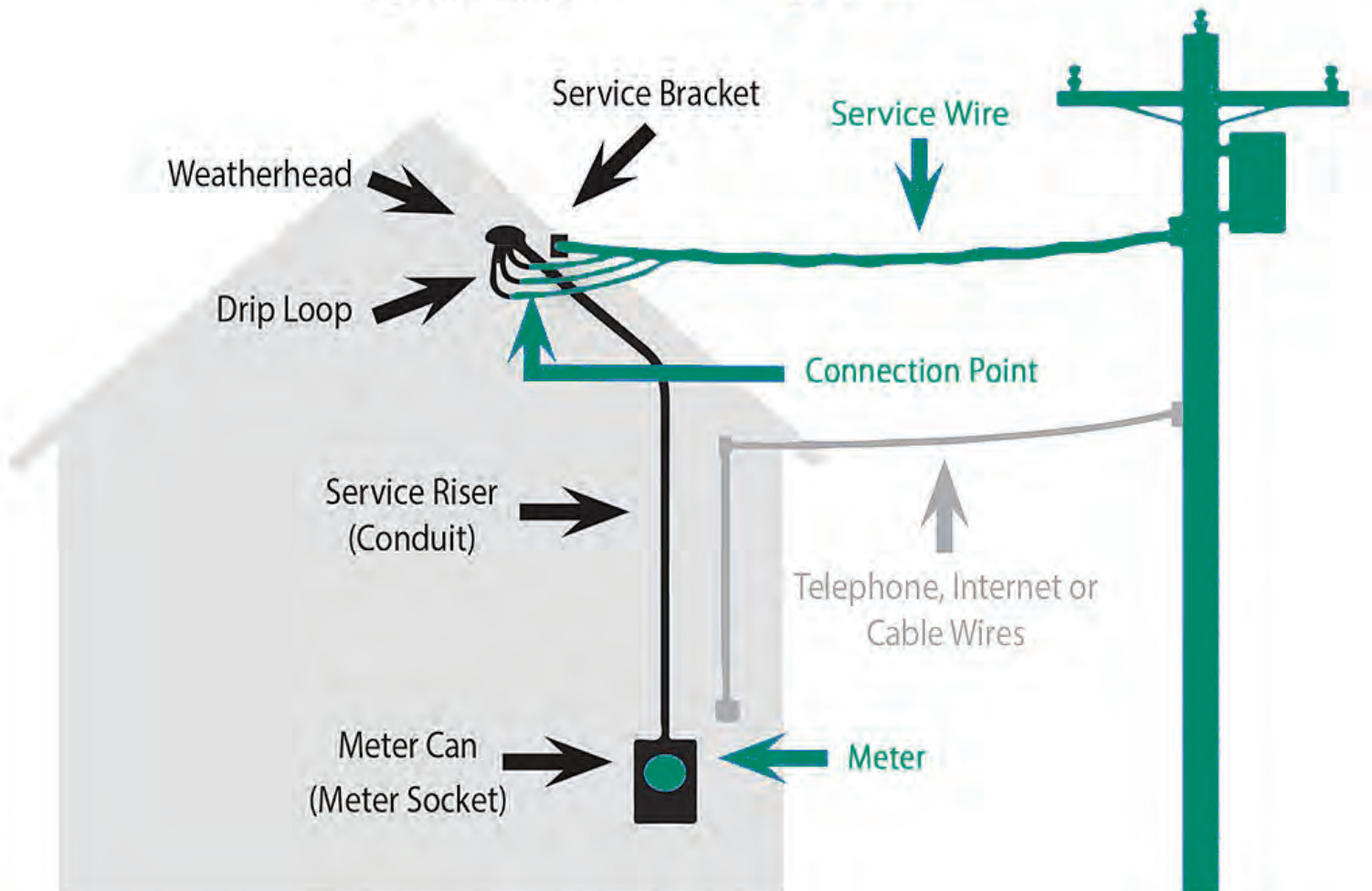
Note: To maintain the security and integrity of the meter, a security tag is affixed to the meter can by CFEC. Cutting this meter seal will result in a fine to the member of record. Before having any electrical work done, make sure you discuss with your contractor whether access to the meter is needed. If it is, then call CFEC at 800-227-1302 or 352-493-2511 and speak to a Member Services Representative.

Call CFEC if you notice damaged equipment so that it can be repaired quickly. Working together, CFEC can safely provide you with the power needed for your home or business.

What's Yours/What's Ours

● Member

● CFEC



The Buzz About Honey!



The story of honey is older than history itself. In fact, ancient cave paintings depict honey being harvested, and it's been used for food, medicine and more by cultures all over the world since.

Honey is a natural product made from bees—one of our planet's most important animals. Honey bees visit millions of blossoms in their lifetimes, making pollination of plants possible and collecting nectar to bring back to the hive.

Lucky for us, bees make more honey than their colony needs and we get to enjoy the excess! For more honey recipes, visit www.freshfromFlorida.com or The Honey Board at www.honey.com.

No-Bake Energy Bites

INGREDIENTS:

- 1/3 cup honey
- 1 1/4 cup old fashioned oats
- 1/2 cup nut butter (sunflower, peanut, cashew, or almond)
- 1 teaspoon vanilla extract
- 3/4-1 cup add-ins (such as chocolate chips, dried fruits, seeds or unsalted nuts)
- 1/4 teaspoon sea salt

PREPARATION:

If using any large dried fruit (such as dates) chop into small pieces by hand or food processor and set aside. Add honey, oats, nut butter, vanilla and salt to a large bowl (or stand mixer) and mix until thoroughly combined. Add in your choice of additional ingredients (seeds, nuts, dried fruit or chocolate chips) and mix again.



If the mixture is too loose, add additional oats as needed 1 tablespoon at a time. If the mixture seems too dry, add 1 tablespoon of water at a time. Scoop desired amount using a tablespoon or small ice-cream scoop and begin rolling the energy bites with your hands. If mixture becomes too sticky, you can dip your fingertips into water. Store in an airtight container in refrigerator for up to 7 days.



Candied Bacon

INGREDIENTS:

- 3 tablespoons honey
- 1/2 cup brown sugar
- 1 tablespoon fresh herbs (such as thyme, rosemary, or parsley)
- 1 pound bacon
- Fresh ground pepper, to taste

PREPARATION:

Preheat oven to 350 degrees. Place bacon on sheet tray and bake for 20 minutes. While bacon is cooking, combine the honey and brown sugar in a small pot. Cook over low heat until sugar is dissolved. Remove from heat and set aside. After 15 minutes, remove bacon from oven and brush with honey mixture. Place back in oven for 5 minutes. Remove and brush with honey mixture one more time. Place back in oven for 5 minutes or until desired crispiness is reached.

Fresh tip: Candied bacon can be served by itself or as a topping on sandwiches or salads.

Payment Options:

- **In Office / Drive-Through** – Payments can be made at any CFEC location during working hours. Payments can also be placed in the drop-box at each location after hours.
- **By Mail** – Mail payments to: Central Florida Electric Cooperative, Inc., P.O. Box 9, Chiefland, FL 32644. Please allow sufficient time for delivery or payment may be received as late.
- **Phone / Online** – Payments can be processed through our third-party provider, SEDC. A \$2.50 (per \$500) service fee will be charged by SEDC and is NOT a CFEC charge. Payments made through SEDC are posted to the member's account at the time of payment. Pay By Phone at **352-493-2515** or toll free at **844-434-3962**. Pay online at www.cfec.com.
- **Bank Locations** – Payments can be made at any Drummond Community Bank location or at the Lafayette State Bank in Bell, Fla., during their normal working hours. Returned checks or payment arrangements cannot be processed by these banks.
- **Bank Draft** – Payments can be made automatically by bank draft by filling out a form and mailing or dropping it off at any CFEC office. The form can be found at www.cfec.com under "forms."ing their normal working hours. Returned checks or payment arrangements cannot be processed by these banks.



Central Florida Electric Cooperative, Inc.

~ YOUR POWER PARTNER ~

Meeting NOTICE:

The Board of Trustees for Central Florida Electric Cooperative, Inc., meets on the fourth Monday of each month at 5 p.m. at the Cooperative's main office in Chiefland. Members are always welcome to attend.

Lights Out? *We Need To Know.*

Outdoor lighting fixtures help light up dark areas near your home or business. Outdoor lights operate automatically by coming on at dusk and going out at daylight.

At times, the outdoor light can malfunction or become inoperative. If this happens, please contact the cooperative so that we can repair the light in a timely manner.



WHEN REPORTING THE PROBLEM, CFEC NEEDS TO KNOW THE FOLLOWING:

- 1. A specific street address of where the outdoor light is located.**
- 2. A description of where on the property the outdoor light is located.**
- 3. A description of the type problem with the outdoor light.**
- 4. Information, including your name, address, telephone number and account number.**

To report an inoperative or malfunctioning outdoor light on CFEC's lines, call (352) 493-2511 or toll-free at 1 (800) 227-1302.

To Report A Power Outage:

- Call: **1-800-227-1302** or **352-493-2511**, follow the prompts of the **Automated Outage Response System**. Before reporting the outage, first check your breaker to see if it has been tripped. If the problem is not in the breaker, call **1-800-227-1302**.
- Use the **CFEC Connect App**: Click on "report outage." Fill in the form and click "submit." If you are already logged in to the app, simply click the "report outage" triangle, and "yes" to report the outage.
- Online: Log on to www.cfec.com, click on "Report An Outage" and fill in the form with information needed to find the correct location of the outage. Hit "Submit" when complete.



**CENTRAL FLORIDA ELECTRIC
COOPERATIVE, INC.**



Central Florida Electric
Cooperative, Inc.

~ YOUR POWER PARTNER ~

PRSRT STD
U.S. POSTAGE
PAID
ORLANDO, FL
PERMIT NO. 3937

MAIN OFFICE

11491 NW 50th Ave.
Chiefland, FL 32626-3247
352-493-2511
or 800-227-1302
www.cfec.com

Physical Address/Payment Locations

MAIL ADDRESS

P.O. Box 9
Chiefland, FL 32644-0009

CROSS CITY OFFICE

207 NE 210 Ave.
Cross City, FL 32628
352-498-7322

INGLIS OFFICE

167 Highway 40 West
Inglis, FL 34449
352-447-3553

ADDITIONAL PAYMENT LOCATIONS

Drummond Community Bank
Lafayette State Bank (Bell only)

*For a complete listing of payment
locations, go to www.cfec.com.*

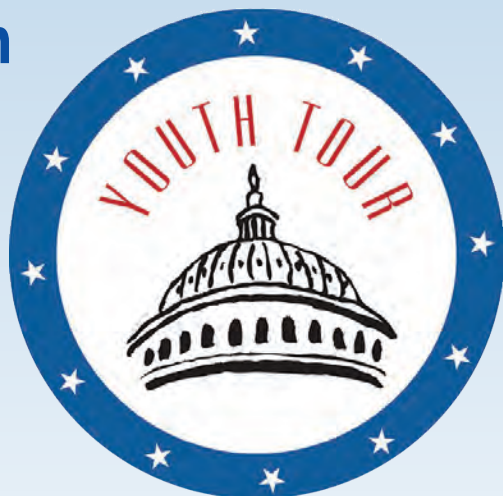
*This institution is an equal opportunity provider
and employer.*

Attention Juniors!

Apply now for the
**Cooperative
Youth Tour** trip
to Tallahassee,
Feb. 17-18, 2021.
The application
is available on
the CFEC website
and can be submitted
to your school guidance
counselor, emailed to Madison
Redd at mredd@cfec.com or Alison DeLoach at
adeloach@cfec.com or dropped off to any of our CFEC
offices marked “**Attn: Member Services.**”

The youth tour is an exciting and engaging program for high
school juniors. Previous participants return excited about what
they have learned, enthusiastic about school and cherishing
time spent making life-long friendships.

Application deadline is Dec. 4, 2020!



In This Issue:

This is a job we take seriously	page 2
Member survey	page 3
Time to apply for the Cooperative Youth Tour	page 4
A look at our Shared Responsibility	page 5
Sweeten things up	page 6

